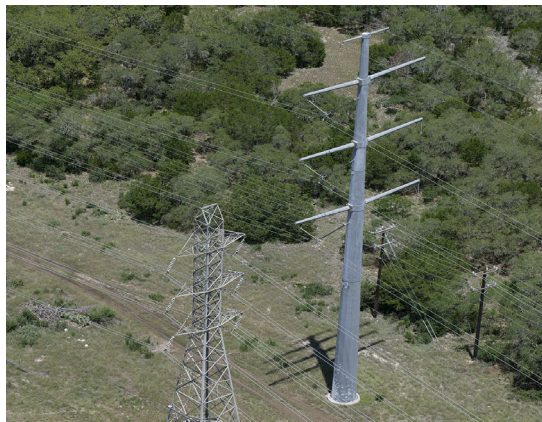


Who is CPS Energy?

Established in 1860, we are the nation's largest public power, natural gas and electric company, providing safe, reliable, and competitively-priced service to **804,000** electric and **343,000** natural gas customers in San Antonio and portions of seven adjoining counties. Our customers' combined energy bills rank among the lowest of the nation's 20 largest cities – while generating **\$7 billion** in revenue for the City of San Antonio for more than seven decades.

As a trusted and strong Community partner, we continuously focus on job creation, economic development and educational investment. True to our **People First** philosophy, we are powered by our skilled workforce, whose commitment to the community is demonstrated through our employees' volunteerism in giving back to our city and programs aimed at bringing value to our customers.

We are among the top public power wind energy buyers in the nation and number one in Texas for solar generation. For more information, visit **cpsenergy.com**.



How can you follow the progress of this project?

Our project team will post project information on the CPS Energy website at www.cpsenergy.com. (search: Merida)

Who can answer your questions?

The website will include regular updates on the project as steps are completed.

Also, you may call, write or e-mail to:

CPS Energy

Robin Tarpley, Project Manager
Merida to Westside Transmission Line
Rebuild Project

Mail Code 100311

P.O. Box 1771

San Antonio, Texas 78296-1771

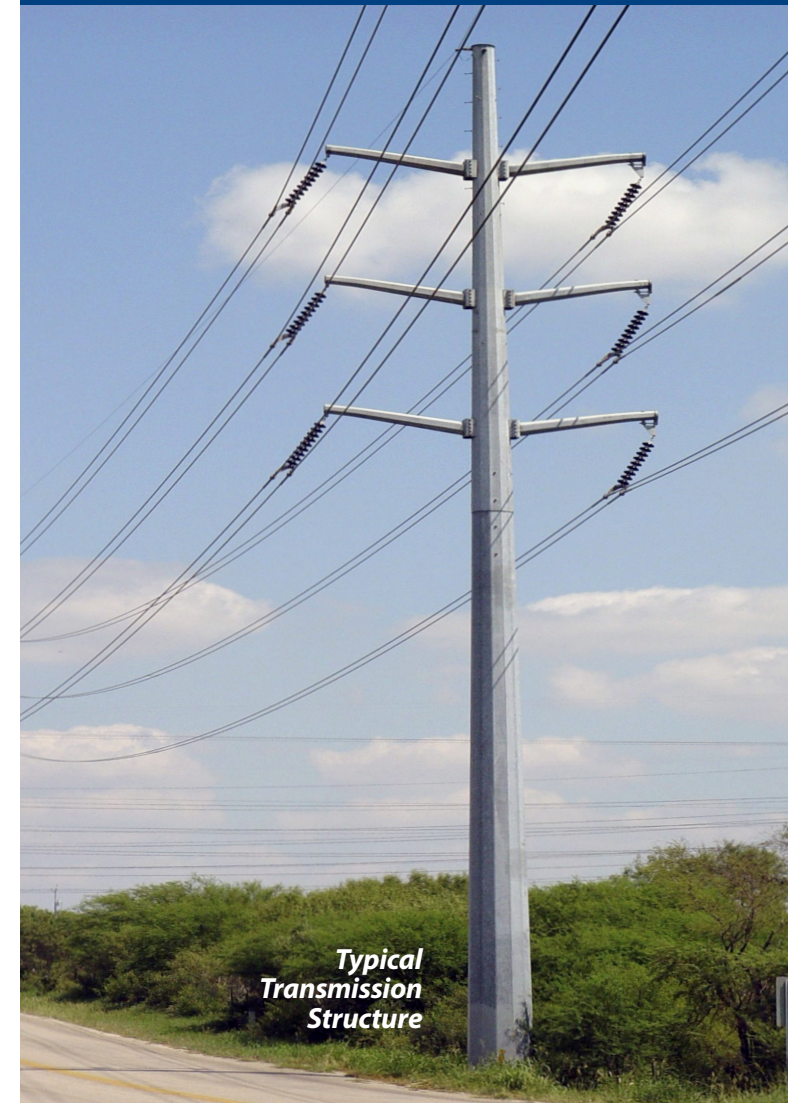
(210) 353-4536

rmtarpley@cpsenergy.com



MERIDA TO WESTSIDE

TRANSMISSION LINE REBUILD PROJECT



Typical
Transmission
Structure

INFORMATION ABOUT THE MERIDA TO WESTSIDE TRANSMISSION LINE PROJECT

What is the Merida to Westside Rebuild Transmission Project?

It is the rebuilding of an existing single circuit 138 kV transmission (power) line between our Merida and Westside Substations. The transmission line route will be four miles long and begins near the Westside Substation, near the intersection of Ruiz St and San Joaquin Ave. The line proceeds south and turns east along Ceralvo St. Then, the line turns north on Cupples Rd. The line turns east on Merida St. to the Merida Substation. It involves completely removing and rebuilding the transmission line including foundations, transmission structures (poles) and electrical wires. The existing lattice (webbed) structures will be replaced with steel poles.

Construction will begin in November 2018.
Scheduled completion date is May 2019.

Why is this project needed?

Maintaining our customers' need for reliable electric power is of utmost importance. The project will improve the quality and safety of an aging transmission line and help ensure electric reliability between the Merida and Westside Substations.

How might this project affect you?

The construction will impact residents in different ways. Construction activities will be focused around the proposed highlighted areas.



Study Area Map

Activities that may be typical to the entire construction project will be the presence of construction equipment and materials as well as temporary partial road closures while construction is in progress.

**Examples of
Transmission
Structures**

Lattice Structure

**Solid Steel
Pole Structure**

